

# melvin

1017.01 - 1017.27



colección

**wallcovering**

**03**

**vinyl**

descripción

**aspecto de hormigón**

composición

**capa vinílica estampada con tintas al agua,  
sobre soporte de algodón**

ancho

**± 130 cm, ± 51/52 inches**

peso

**± 350 gr/m<sup>2</sup>, ± 15 oz/yd<sup>1</sup>**

absorción del ruido

**ISO 354, alphaw 0.10**

combustión retardada

**EN 13501, B s1 d0**

**ASTM E84, A**

**NFPA 286**



**vinyl**   
COMMITTED TO  
SUSTAINABLE DEVELOPMENT

**CE** EN 15102



# melvin

1017.01 - 1017.27

---



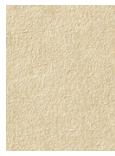
1017.13



1017.06



1017.02



1017.05



1017.08



1017.24



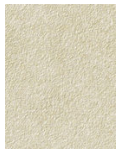
1017.07



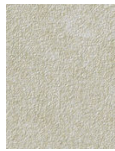
1017.04



1017.03



1017.10



1017.16



1017.14



1017.11



1017.19



1017.22



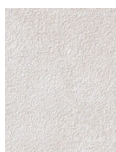
1017.09



1017.25



1017.21



1017.01



1017.20



1017.26



1017.18



1017.17



1017.15



1017.12



1017.23



1017.27